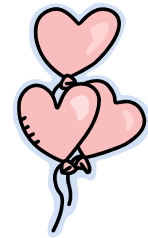




ELEMENTARY LUNCH

FEBRUARY 2009



BELLEVUE PUBLIC SCHOOLS
SUBJECT TO CHANGE WITHOUT NOTICE

MONDAY	TUESDAY	WEDNESDAY	THURSDAY	FRIDAY
STEAMED HOT DOG 2 ON BUN BAKED BEANS APPLESAUCE MILK	NACHOS W/MEAT & 3 CHEESE CARROT STICKS APPLE MILK	SALISBURY STEAK 4 MASHED POTATOES & GRAVY WHEAT ROLL PEACHES MILK	CHEESEBURGER ON BUN 5 POTATO ROUNDS PEARS ICE CREAM MILK	PEPPERONI PIZZA 6 SALAD W/DRESSING PINEAPPLE MILK
SPAGHETTI W/ 9 MEAT SAUCE GARLIC BREAD GREEN BEANS MIXED FRUIT MILK	SOFT TACO W/MEAT, 10 CHEESE, LETTUCE, & TOMATO PEACHES MILK	FRENCH TOAST STICKS 11 W/SYRUP SAUSAGE TRI TATER APPLE MILK	NO 12 SCHOOL	NO 13 SCHOOL
NO 16 SCHOOL	CORN DOG 17 POTATO ROUNDS APPLESAUCE MILK	SUB SANDWICH 18 LETTUCE & TOMATO PEARS MILK	CHICKEN PATTY ON BUN 19 OVEN FRIES MIXED FRUIT COOKIE MILK	CHEESE BREAD W/ 20 MEAT SAUCE GREEN BEANS PEACHES MILK
BAKED CHICKEN 23 NUGGETS CORN WHEAT ROLL MILK MANDARIN ORANGES	STUDENT 24 CHOICE	CHEESE QUESADILLA 25 MIXED VEGETABLES PINEAPPLE MILK	CHEESEBURGER ON BUN 26 POTATO ROUNDS PEACHES MILK	MACARONI & CHEESE 27 GREEN BEANS WHEAT ROLL PEARS MILK
ALTERNATE LUNCH IS: YOGURT CHEESE STICK BREAD FRUIT VEGETABLE MILK				

*In the operation of school nutrition program, no child will be discriminated against of race, sex, color, national origin, age or disability. If you believe you have been discriminated against, write immediately to: Secretary of Agriculture, Washington DC 20250